



**FLEXFIT®**

**2023 CATALOG**

**M I D D L E E A S T**

# SECTION CONTENTS

	PG.	
ABOUT US	3	
TECHNOLOGIES	4	
SIZE CHART	5	
FLEXFIT DELTA®	13	
180A 180A CARBON		
MULTICAM®	16	
6277MC 6089MC 6606MC		
FLEXFIT®CAP	18	
6277 6511		
FLEXFIT®PERFORMANCE	22	
6577CD		
FLEXFIT®BUCKET HAT	24	
5003		
FLEXFIT 110®	27	
110P 110T <u>NEW</u> 8110		
YP CLASSICS® JOCKEY	32	
7005		
YP CLASSICS®SNAPBACK	35	
6089M 6789M 6089CA 5089M		
YP CLASSICS®TRUCKER	42	
6606 6606T 6606W 6606R 6506 6006 6006T 6006W		
YUPOONG®DAD CAP	54	
6245CM		
YUPOONG®ADJUSTABLE	57	
6363B 6363OEM		
FLEXFIT®DISPLAY STAND	60	
CUSTOM OVERSEAS	61	
CUSTOM DOMESTIC	62	

# ABOUT US

Flexfit (EMEI) Europe, Middle East, and India was established in the United Kingdom in 1992 and manages sales, marketing and distribution operations in these regions including Russian federation subcontinent.

We have developed a network of distribution hubs in these regions which represent the core values of our business and products. Internal growth, acquisitions and strategic alliances, has allowed us to build up a powerful network across 4 continents which is managed by a team of professionals.

Flexfit Middle East Division is committed to develop relationships at the highest level of integrity in a professional and responsible manner. Passionate about what we do, inventive and enterprising is in our DNA, we undertake to design bespoke products and services and to carry out those with the utmost transparency, respect for the commitments and compliance. Our commitment to our social responsibility is reflected in the Group's Ethics Charter and contributes to protecting the environment and that foster sustainable development.

Excelsior is our core business philosophy and we are proud to part of this principal guide. We are passionate and enthusiastic about our exquisite unique headwear and have developed innovative services that equally complement the image including unrivalled customer service. We listen with care and commit ourselves to fully understand your business allowing us to develop dynamic partnerships and forward planning strategies.

At Flexfit EMEI we are committed on building an environment with our customers that is team orientated and allow to strengthen through our close collaboration. Our aim is always to grow and we are dedicated to deliver our brand values which inspire us to challenge and lead through creativity.

# TECHNOLOGIES



## FLEXIBLE VISOR

Super lightweight and designed to be bent in any way and still keep its shape.



## PRO-FORMANCE

Combines Cool & Dry properties with the premium look and feel of wool fabric.



## FLEXFIT X-MESH

A revolutionary stretchable mesh that provides ultimate ventilation and comfort.



## PERMACURV

Visor technology that maintains its proper shape and curve at all times.



## UNIPANEL

Seamless front panel that provides a smooth, uninterrupted canvas for immediate wear or customisation.



## ECODRY

Environmentally friendly water repellency without the use of hazardous chemicals.



## HYBRID TECH

Combining water repellency and Cool & Dry's moisture-wicking for ultimate comfort.



## FLEXFIT TECH

Weaves polyurethane spandex throughout the cap's crown for a secure and flexible fit.



## STAIN BLOCK TECHNOLOGY

This patented technology features a 3 layer multifunctional sweatband that effectively absorbs, stores and diffuses sweat to the undersvisor where it evaporates.



## ULTRAFIBRE

Robust, lightweight and wind/water resistant fibres with a natural shine that emanates strength.



## COOL & DRY

Wicks perspiration away from the body, making sure to stay cool, dry and refreshed.



## HYPER TECH

Conquers all of the elements: thermal regulation, Cool & Dry, anti-bacterial and UV protection.



## ECOWASH

Clean fabric washing technology with less water, less energy and no chemical usage.



# SIZING CHART

## HEAD SIZE

INCHES

20 20 1/2 20 3/4 21 1/4 21 1/2 22 22 1/2 23 1/4 23 3/4 23 1/2 23 3/4 24 1/4 24 3/4 25

CM

51 52 53 54 55 56 57 58 59 60 61 62 63 64

SIZES

6 1/2 6 3/4 6 1/2 6 3/4 6 1/2 7 7 1/2 7 1/4 7 3/4 7 1/2 7 3/4 7 1/2 7 3/4 7 1/2 8



## FLEXFIT DELTA®

S/M 6 1/2 6 3/4 6 1/2 6 3/4 6 1/2 7 7 1/2 7 1/4 7 3/4 7 1/2 7 3/4 7 1/2 7 3/4 8

L/XL 6 1/2 6 3/4 6 1/2 6 3/4 6 1/2 7 7 1/2 7 1/4 7 3/4 7 1/2 7 3/4 7 1/2 7 3/4 8

## FLEXFIT®



OSFA 6 1/2 6 3/4 6 1/2 6 3/4 6 1/2 7 7 1/2 7 1/4 7 3/4 7 1/2 7 3/4 7 1/2 7 3/4 8

YOUTH 6 1/2 6 3/4 6 1/2 6 3/4 6 1/2 7 7 1/2 7 1/4 7 3/4 7 1/2 7 3/4 7 1/2 7 3/4 8

XS 6 1/2 6 3/4 6 1/2 6 3/4 6 1/2 7 7 1/2 7 1/4 7 3/4 7 1/2 7 3/4 7 1/2 7 3/4 8

S/M 6 1/2 6 3/4 6 1/2 6 3/4 6 1/2 7 7 1/2 7 1/4 7 3/4 7 1/2 7 3/4 7 1/2 7 3/4 8

L/XL 6 1/2 6 3/4 6 1/2 6 3/4 6 1/2 7 7 1/2 7 1/4 7 3/4 7 1/2 7 3/4 7 1/2 7 3/4 8

XXL 6 1/2 6 3/4 6 1/2 6 3/4 6 1/2 7 7 1/2 7 1/4 7 3/4 7 1/2 7 3/4 7 1/2 7 3/4 8



## ONE TEN FLEXFIT®

OSFA 6 1/2 6 3/4 6 1/2 6 3/4 6 1/2 7 7 1/2 7 1/4 7 3/4 7 1/2 7 3/4 7 1/2 7 3/4 8

## TWO TEN FITTED®



YOUTH 6 1/2 6 3/4 6 1/2 6 3/4 6 1/2 7 7 1/2 7 1/4 7 3/4 7 1/2 7 3/4 7 1/2 7 3/4 8

S/M 6 1/2 6 3/4 6 1/2 6 3/4 6 1/2 7 7 1/2 7 1/4 7 3/4 7 1/2 7 3/4 7 1/2 7 3/4 8

L/XL 6 1/2 6 3/4 6 1/2 6 3/4 6 1/2 7 7 1/2 7 1/4 7 3/4 7 1/2 7 3/4 7 1/2 7 3/4 8

XXL 6 1/2 6 3/4 6 1/2 6 3/4 6 1/2 7 7 1/2 7 1/4 7 3/4 7 1/2 7 3/4 7 1/2 7 3/4 8

YUPOONG® ADJUSTABLE

## ADJUSTABLE

OSFA 6 1/2 6 3/4 6 1/2 6 3/4 6 1/2 7 7 1/2 7 1/4 7 3/4 7 1/2 7 3/4 7 1/2 7 3/4 8

\*This chart is for general use only. Please refer to each style for most accurate sizing info.

FLEXFIT **DELTA** 180  
ENGINEERED CHANGE



---

INTRODUCTION TO FLEXFIT DELTA

**THIS IS FLEXFIT DELTA.  
THE DIFFERENCE IS  
8.26G A 10% WEIGHT  
REDUCTION.**

80.10 G  71.84 G

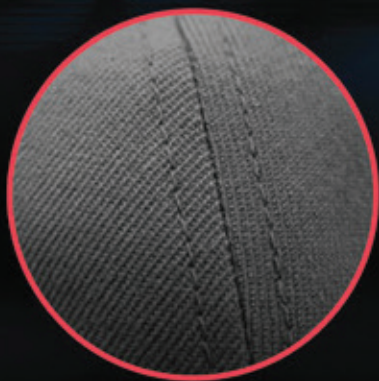


WE HAVE SPENT YEARS AND SLEEPLESS NIGHTS OVER 10%. THE SAME 10% THAT DROVE US TO MAKE A BETTER CAP.

\* +/- 3% (CONFIDENCE INTERVAL OF 95%)

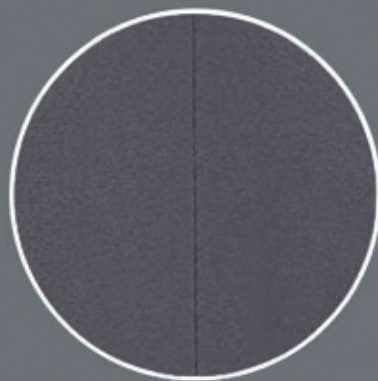
## TYPICAL CAP

- HEAVY STITCHING
- CONVENTIONAL
- UNSIGHTLY



## SEAMLESS FLEXFIT DELTA

- SEW-FREE FINISH ON ALL PANELS
- LASER CUT OR SEWN EYELETS
- HIGH-TECH, MINIMAL AND LIGHT
- WATER RESISTANT



POLYESTER/PERFORMANCE FABRIC ONLY

## FLEXFIT BOND TAPE

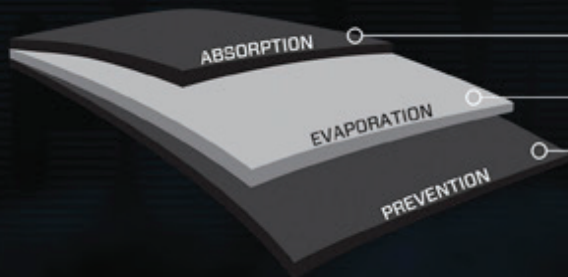
- SEAM SEALED
- LIGHTWEIGHT
- REDUCED STITCHING
- ODOR REPELLENT
- THERMAL REGULATION
- ANTI-BACTERIAL
- COLORS: BLACK & WHITE



FLEXFIT BOND TAPING

# SWEATBAND CONSTRUCTION

3 LAYER, HIGH-TECH CONSTRUCTION



LAYER 1: FAST SWEAT ABSORPTION

LAYER 2: QUICK DRY + COMFORT CUSHION

LAYER 3: COATED KNIT TO PREVENT STAINING ON THE CAP CROWN



NEW R&D SWEATBAND - SILITAN (LIGHTWEIGHT) PRINT - NO WOVEN LABEL  
COLORS: BLACK OR WHITE



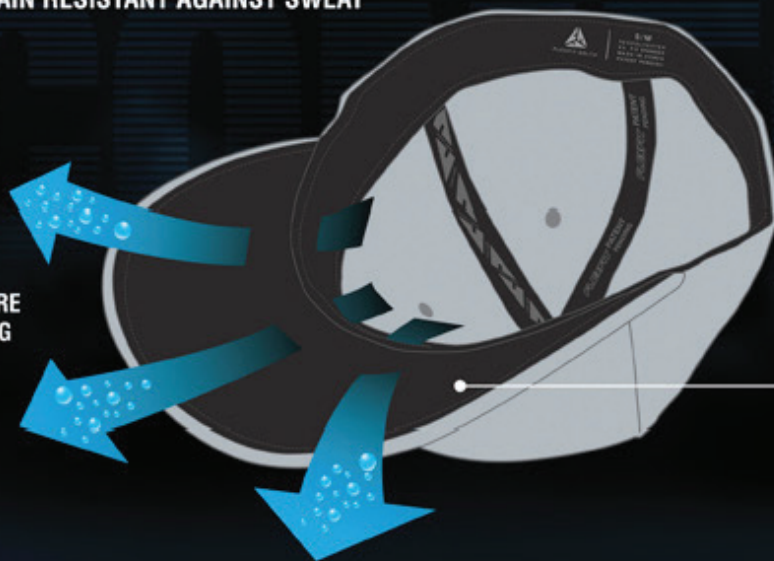
## UNDERVISOR CONSTRUCTION

COOL & DRY

MOISTURE WICKING + QUICK DRYING

HIGHLY STAIN RESISTANT AGAINST SWEAT

MOISTURE  
WICKING



**PATENT PENDING** STAIN BLOCK  
TECH DIFFUSES SWEAT  
THROUGH THE UNDERVISOR  
PREVENTING SWEAT STAINS  
ON THE CAP'S CROWN.



COOL & DRY - MOISTURE WICKING + QUICK DRYING - HIGHLY STAIN RESISTANT AGAINST SWEAT





180A

FLEXFIT DELTA® ADJUSTABLE



COMPOSITION:

92% Polyester  
8% Spandex

SIZES:

OSFA  
YOUTH ONLY AVAILABLE COLORS MARKED\*

<b>PROFILE</b>	<b>VISOR</b>	<b>CROWN</b>	<b>PANELS</b>
Mid	Permacurv®	3 1/2"	6

**180A****FLEXFIT DELTA® ADJUSTABLE**

Flexfit Delta® is a revolutionary cap that is lighter, sleeker, smarter and more comfortable choice.



SILVER



NAVY



BLACK\*



WHITE\*



BRICK RED



PRINCE BLUE\*



LIGHT PURPLE



PASTLE LAVENDER\*



ITALIAN STRAW



BUCK



**FLEXFIT®**  
EUROPE - MIDDLE EAST - INDIA



COMPOSITION: 100% Polyester  
SIZES: OSFA

**PROFILE** Mid  
**VISOR** Permacurv®  
**CROWN** 3 1/2"  
**PANELS** 6

## 180A CARBON FLEXFIT DELTA® CARBON

Flexfit Delta® Carbon combines carbon fiber-like grid for stretchability and durability while featuring the same revolutionary no-seam construction and stain-block technology.



MELANGE BLUE



MELANGE NAVY





**MULTICAM®**

## **MULTICAM®**

MULTICAM® was developed to effectively limit the visual and near-ir signature of a person operating across a very wide range of physical environments and seasons. After many successful evaluations, after being proven in combat, and after becoming the officially issued pattern of the U.S. Army for all Afghanistan operations in 2010, MULTICAM® is the proven multi-environment concealment.



## 6277MC THE ONE AND ONLY ORIGINAL FLEXFIT® IN MULTICAM®

Official licensed MULTICAM® pattern. Pattern is the proven multienvironment concealment solution. Hard buckram. Black undervisor. 8 rows of stitching on visor.

**MULTICAM®**

**CONTENTS**  
98% Cotton,  
2% P.U. Spandex

**SIZE**  
S/M 6 3/4" - 7 1/4"

**PROFILE**  
Mid

**VISOR**  
Permacurvy®

**CROWN**  
3 1/2"

**PANELS**  
6



## 6089MC YUPOONG® CLASSIC SNAPBACK MULTICAM®

Official licensed MULTICAM® pattern. Pattern is the proven multienvironment concealment solution. Matching plastic snap. Hard buckram. Black undervisor.

**MULTICAM®**

**CONTENTS**  
98% Cotton,  
2% P.U. Spandex

**SIZE**  
OSFA

**PROFILE**  
High

**VISOR**  
Flat

**CROWN**  
3 3/4"

**PANELS**  
6



## 6606MC YUPOONG® RETRO TRUCKER MULTICAM®

Official licensed MULTICAM® pattern. Pattern is the proven multienvironment concealment solution. Trucker mesh back. Matching plastic snap. Hard buckram. Black undervisor.

**MULTICAM®**

**CONTENTS**  
71% Cotton  
28% Nylon  
1% Polyurethane

**SIZE**  
OSFA

**PROFILE**  
Mid

**VISOR**  
Permacurvy®

**CROWN**  
3 1/2"

**PANELS**  
6





6277

FLEXFIT® WOOLY COMBED





COMPOSITION:

63% Polyester  
34% Cotton  
3% Spandex

SIZES:

XS (6 5/8" - 7 1/8") **ONLY AVAILABLE COLORS MARKED \*\***  
S/M (6 3/4" - 7 1/4")  
L/LX (7 1/8" - 5 5/8") **ONLY AVAILABLE COLORS MARKED \***

**PROFILE** **VISOR** **CROWN** **PANELS**  
Mid Permacurv® 3 1/2" 6

**6277**

## FLEXFIT® WOOLLY COMBED

Athletic Shape. Hard Buckram. Tonal undervisor.  
Look and feel of wool. 8 rows of stitching on visor.



DARK GREY



SILVER



GREY



BLACK\*



NAVY\*



FRESH GREEN



GOLD



ROYAL



WHITE



MAROON



RED



ORANGE



BROWN



CAROLINA BLUE



PINK\*\*



KHAKI



**6511**

FLEXFIT® TRUCKER MESH





COMPOSITION:

SIZES:

55% Polyester

S/M (6 3/4" - 7 1/4")

43% Cotton

2% PU Spandex

PROFILE	VISOR	CROWN	PANELS
Mid	Permacurv®	3 1/2"	6

# 6511

## FLEXFIT®TRUCKER MESH

Innovative elastic trucker mesh for ultimate comfort.

6-panel structured cap with silver undervisor. Flexfit® fitted cap for style and comfort. 8 rows of stitching on visor.

FLEXFIT THE ONE AND ONLY ORIGINAL®



BLACK



NAVY



WHITE



SPRUCE



**6577CD**

FLEXFIT® COOL & PIQUÉ MESH







COMPOSITION:

99% Polyester  
1% Spandex

SIZES:

S/M (6 3/4" - 7 1/4")  
L/LX (7 1/8" - 5 5/8") ONLY AVAILABLE COLORS MARKED \*

<b>PROFILE</b>	<b>VISOR</b>	<b>CROWN</b>	<b>PANELS</b>
Mid	Curved	3 1/2"	6

**6577CD**

**FLEXFIT® COOL & PIQUÉ MESH**

Lightweight. Quick Drying. Moisture wicking. Piqué weave.  
Hard Buckrum. Silver undervisor. 8 rows of stitching on visor.



NAVY \*



RED



BLACK \*



ROYAL



SILVER



WHITE \*

5003

FLEXFIT® BUCKET HAT





COMPOSITION:

98% Cotton  
2% Elastane

SIZES:

OSFA

**PROFILE**  
Mid

**VISOR**  
Soft

**CROWN**  
3"

**PANELS**  
3

**5003**

## FLEXFIT® BUCKET HAT

Flexfit® Bucket Hat is integrated with elastane woven fabric throughout entire crown for a perfect and comfortable fit.



BLACK



KHAKI



WHITE



NAVY





**110P**

FLEXFIT 110® COOL & DRY MINI PIQUE





COMPOSITION: SIZES:

100% Polyester OSFA

PROFILE	VISOR	CROWN	PANELS
Mid	Permacurv®	3 1/2"	6



BLACK



SILVER



WHITE



NAVY

**110P****FLEXFIT 110® COOL & DRY MINI PIQUE**

Lightweight cap with moisture-wicking and water repellent abilities. 6-panel structured cap with matching undervisor. D-ring hook and loop closure with 8 rows of stitching on visor. Adjustable + Flexfit® Technology.



**110T**

FLEXFIT 110® MESH CAP





COMPOSITION: SIZES:

56% Polyester OSFA  
44% Cotton

<b>PROFILE</b>	<b>VISOR</b>	<b>CROWN</b>	<b>PANELS</b>
Mid	Permacurv®	3 1/2"	6

## 110T FLEXFIT 110® MESH CAP

Flexfit 110® mesh cap for ultimate comfort and ventilation, a unique combination of Flexfit® tech + adjustable closure for a super comfort fit with moisture wicking sweatband allowing you to stay dry.



BLACK



NAVY



DARK GREY



WHITE





8110

FLEXFIT 110® VISOR





COMPOSITION:

97% Polyester  
3% PU Spandex

SIZES:

OSFA

PROFILE	VISOR	CROWN	PANELS
Low	Permacurv®	2 1/2"	3



BLACK



WHITE

**8110**

## FLEXFIT 110® VISOR

Adjustable on the outside, Flexfit® Tech on the inside. Mini pique, Cool & Dry fabric for moisture wicking & quick drying. Elastic flexloop attached to hook & loop closure for unparalleled comfort. Matching undervisor.





7005

YP CLASSICS® JOCKEY







COMPOSITION: 100% Cotton  
SIZES: OSFA

<b>PROFILE</b>	<b>VISOR</b>	<b>CROWN</b>	<b>PANELS</b>
Low	Flat	2 3/4"	5

## 7005 YP CLASSICS® JOCKEY

Fine tune your sporty look with the camper shape Jockey cap. Classic camper shape. Black clip closure. 4 black, metal eyelets. Soft buckram. Matching undervisor.



BLACK

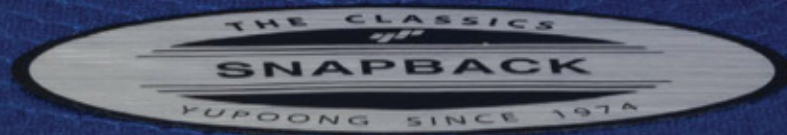


NAVY



6089M

YP CLASSICS® SNAPBACK



**COMPOSITION:**

80% Acrylic  
20% Wool

**SIZES:**

OSFA  
YOUTH ONLY AVAILABLE COLORS MARKED \*

**PROFILE**

High

**VISOR**

Flat

**CROWN**

3 3/4"

**PANELS**

6

**6089M****YP CLASSICS® SNAPBACK**

Classic shape. Premium wool blend. Matching plastic snap.  
Hard buckrum. Self coloured undervisor. 8 rows of stitching  
on visor.



SILVER



NAVY



RED\*



ROYAL



HEATHER



BLACK\*



WHITE\*





6789M

YP CLASSICS® CURVED VISOR  
SNAPBACK



COMPOSITION:

80% Acrylic  
20% Wool

SIZES:

OSFA

**PROFILE**

Mid

**VISOR**

Permacurv®

**CROWN**

3 1/2"

**PANELS**

6

**6789M****YP CLASSICS® CURVED VISOR  
SNAPBACK**

Premium wool blend. Hard Buckrum. Matching plastic snap.

Silver undervisor. 8 rows of stitching on visor. Matching undervisor.



BLACK



HEATHER GREY



NAVY





COMPOSITION:      SIZES:  
60% Cotton      OSFA  
40% Polyester

PROFILE	VISOR	CROWN	PANELS
High	Flat	3 3/4"	6



CAMO

**6089CA**

## YP CLASSICS® CAMO SNAPBACK

High quality woodland camo print. Classic shape. Black plastic snap. Hard buckram. Classic green undervisor. 8 rows of stitching on visor.

COMPOSITION:

80% Acrylic  
20% Wool

SIZES:

OSFA

**PROFILE**

High

**VISOR**

Flat

**CROWN**

3 3/4"

**PANELS**

5



BLACK

**5089M****YP CLASSICS® 5 PANEL  
SNAPBACK**

Classic shape. Premium wool blend. Matching plastic snap.  
Hard buckrum. Self coloured undervisor. 8 rows of stitching  
on visor.







6606

YP CLASSICS® RETRO TRUCKER





COMPOSITION: SIZES:

47% Cotton  
28% Nylon  
25% Polyester

OSFA

**PROFILE** **VISOR** **CROWN** **PANELS**

Mid Permacurv® 3 1/2" 6

**6606**

## YP CLASSICS® RETRO TRUCKER

Trucker mesh back. Matching plastic snap. Hard buckram.  
Matching undervisor. 8 rows of stitching on visor.



DARK GREY



MAROON



BUCK



SILVER



ROYAL



KHAKI



RED



PINK



NAVY



WHITE



BLACK

COMPOSITION:

47% Cotton  
28% Nylon  
25% Polyester

SIZES:

OSFA  
YOUTH ONLY AVAILABLE COLORS MARKED \*

PROFILE	VISOR	CROWN	PANELS
Mid	Permacurv®	3 1/2"	6

# 6606T

## YP CLASSICS® 2-TONE RETRO TRUCKER

Trucker mesh back. Matching plastic snap. Hard buckrum.  
Matching undervisor. 8 rows of stitching on visor.



BLACK/WHITE\*



NAVY/WHITE



RED/WHITE\*



ROYAL/WHITE



SILVER/WHITE



KHAKI/WHITE



SKY BLUE/WHITE\*  
AVAILABLE IN YOUTH ONLY



PINK/WHITE\*  
AVAILABLE IN YOUTH ONLY



CAMO/BLACK





6606W

YP CLASSICS® TRUCKER WITH WHITE  
FRONT PANEL



COMPOSITION:

SIZES:

65% Polyester  
35% Cotton

OSFA

PROFILE	VISOR	CROWN	PANELS
Mid	Permacurv®	3 1/2"	6



BLACK/WHITE/BLACK



NAVY/WHITE/NAVY

**6606W**

## YP CLASSICS® RETRO TRUCKER WITH WHITE FRONT PANEL

Premium mesh panels for breathability. 6-panel structured trucker with matching undervisor. Matching snapback with 8 rows of stitching on visor. Comes with white front panel. Esteemed since 1974.







COMPOSITION:

56% Recycled Polyester  
44% Cotton

SIZES:

OSFA

PROFILE	VISOR	CROWN	PANELS
Mid	Permacurv®	3 1/2"	6



BLACK

**6606R** 

## YP CLASSICS® RECYCLED RETRO TRUCKER

Trucker mesh back. Matching plastic snap. Hard buckrum.  
Matching undervisor. 8 rows of stitching on visor.



COMPOSITION: 65% Polyester  
35% Cotton

SIZES: OSFA

PROFILE	VISOR	CROWN	PANELS
Mid	Permacurv®	3 1/2"	5

# 6506 YP CLASSICS® 5-PANEL RETRO TRUCKER

Featuring the mesh fabric panels for ultimate breathability, the YP Classics® 5-panel Retro Trucker cap offers the finest style and max breathability. It is designed to boost your activity.



BLACK



CHARCOAL



WHITE



NAVY



6006

YP CLASSICS® TRUCKER



COMPOSITION:

47% Cotton  
28% Nylon  
25% Polyester

SIZES:

OSFA

**PROFILE**

High

**VISOR**

Flat

**CROWN**

3 1/2"

**PANELS**

5

6006

## YP CLASSICS® TRUCKER

Ideal for screenprinting & embroidery. Trucker mesh back.  
Matching plastic snap. Hard buckrum. Matching undervisor.  
8 rows of stitching on visor.



NAVY



CHARCOAL



RED



BLACK



WHITE



**FLEXFIT®**

EUROPE - MIDDLE EAST - INDIA



COMPOSITION:

47% Cotton  
28% Nylon  
25% Polyester

SIZES:

OSFA

PROFILE	VISOR	CROWN	PANELS
High	Flat	3 1/2"	5

**6006T**

## YP CLASSICS® 2-TONE TRUCKER

Ideal for screenprinting & embroidery. Trucker mesh back. Matching plastic snap. Hard buckrum. Matching undervisor. 8 rows of stitching on visor.



NAVY/WHITE



BLACK/WHITE



CHARCOAL/WHITE



RED/BLACK





COMPOSITION: SIZES:  
 47% Cotton OSFA  
 28% Nylon  
 25% Polyester

PROFILE	VISOR	CROWN	PANELS
High	Flat	3 1/2"	5

**6006W**

## YP CLASSICS® TRUCKER WITH WHITE FRONT PANEL

Ideal for screenprinting & embroidery. Trucker mesh back. Matching plastic snap. Hard buckrum. Matching undervisor. 8 rows of stitching on visor.



BLACK/WHITE/BLACK



RED/WHITE/RED



NAVY/WHITE/NAVY



C.BLUE/WHITE/C.BLUE



ROYAL/WHITE/ROYAL





6245CM UNSTRUCTURED  
YUPOONG® DAD CAP







COMPOSITION: SIZES:  
100% Cotton OSFA

**PROFILE** **VISOR** **CROWN** **PANELS**  
Low Permacurv® 3 1/8" 6



BLACK



NAVY



KHAKI



WHITE



PINK

## 6245CM **UNSTRUCTURED** YUPOONG® DAD CAP

Extra low profile. Antique brass buckle closure. Matching undervisor. Unstructured for classic, elegant style. 4 rows of stitching on visor.

6363B

YUPOONG® MID PROFILE



COMPOSITION:

SIZES:

60% Cotton  
40% Polyester

OSFA

PROFILE	VISOR	CROWN	PANELS
Mid	Permacurv®	3 1/2"	6

6363B

## YUPOONG® MID PROFILE

Medium buckram. Matching hook & loop closure. Tonal undervisor.  
8 rows of stitching on visor.



GREY



KHAKI



NAVY



ROYAL



RED



BLACK



WHITE



**FLEXFIT®**  
EUROPE - MIDDLE EAST - INDIA







COMPOSITION:

98% Organic Cotton  
2% PU Spandex

SIZES:

OSFA

<b>PROFILE</b>	<b>VISOR</b>	<b>CROWN</b>	<b>PANELS</b>
Low	Permacurv®	2 3/4"	5

**6363OEM** 

**YUPOONG® ORGANIC COTTON**

Flexfit® has followed the general trend and produced one of its classics in pure organic cotton.



DARK GREY



RED



PURPLISH NAVY



BURNT OLIVE



WHITE



BLACK

YUPOONG ORGANIC COTTON

# FLEXFIT® DISPLAY STAND



# CUSTOM OVERSEAS PROGRAM

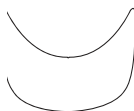
For over 44 years, Flexfit - Yupoong has focused on innovation, technology and service to become the world's premier headwear manufacturer. The private label possibilities are endless with a myriad of styles, including Flexfit, fitteds, adjustables, snapbacks, camo caps, bucket hats and much more. We even have comprehensive services that include in-house design assistance, information on the latest trends, endless embellishment techniques, fabrics and much more.

## ACTIVE BRAND PARTNERS

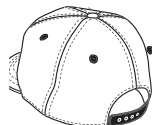
Nike, Adidas, Reebok, Puma, Starter Black Label, Mitchell & Ness, Jordan Brand, Stussy, Obey, Brixton, HUF, Undeclared, The Hundreds, Hall of Fame, 10 Deep, LRG, VANS, Hurley, RVCA, DC Shoes, Quiksilver, Billabong, Volcom, Alpinestars, Fox Racing, The North Face, Columbia, Arc'teryx, Burton, Oakley, Under Armour, Patagonia, Kangol, Ping, Polo Ralph Lauren, FUBU, Rocawear, Mercedes Benz and much more.



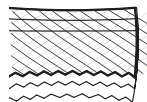
**FITS**



**VISORS**



**BACK  
CLOSURES**



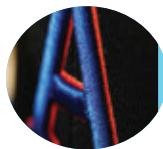
**FABRICS**



**SWEATBANDS**



**LEATHER**



**EMBROIDERY**



**PATCHES &  
LABELS**



**PRINTS**



**FABRIC**

## MINIMUMS:

576 pieces per style

## LEAD TIME:

PROTOTYPE SAMPLE: 2-3 weeks SALESMEN SAMPLE: 3-4 weeks

BULK PRODUCTION: 8-12 weeks \*Lead times are subject to change

## EMAIL:

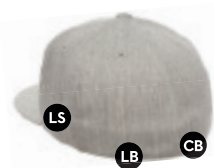
[sales@flexfit-headwear.com](mailto:sales@flexfit-headwear.com)

[www.flexfit-headwear.ae/custom-program](http://www.flexfit-headwear.ae/custom-program)

# CUSTOM DOMESTIC PROGRAM

But what if you need a job done fast with a limited run? Even with considerably shorter lead times and lower minimums, our domestic program will meet your updated specifications. Select styles from this catalogue and will then brand the caps locally with the design of your choice. The available embellishment techniques are flat embroidery, 3D embroidery and screenprinting.

## DOMESTIC PROGRAM LOGO PLACEMENT OPTIONS



LF= Left Front  
LS= Left Side  
LB= Left Back  
CF= Center Front  
CB= Center Back  
RF= Right Front  
RS= Right Side  
RB= Right Back

### BRANDING EXAMPLES



### MINIMUMS:

24 pieces per style / color

### LEAD TIME:

PROTOTYPE SAMPLE: 10-12 workdays

BULK PRODUCTION: 14-18 workdays

\*Lead times are subject to change

### EMAIL:

deprogram@flexfit-headwear.com  
[www.flexfit-headwear.ae/custom-program](http://www.flexfit-headwear.ae/custom-program)





***FLEXFIT***®

EUROPE - MIDDLE EAST - INDIA